

# An Introduction to our Facilities

**CHANG**   
Addiction Rehab





# Contents

1. Primary Care, Northcliff
2. Secondary Care, Tres Jolie
3. Halfway Housing =  
Fairland and Melville
4. Contact Changes



# Change is an inside job

Most medical aids pay for inpatient addiction treatment and we'll obtain pre-authorization for you.

We offer the full continuum of care: outpatient, detox, primary care, long term rehab and halfway house / sober home reintegration.



# Our Primary Care Facility



**216 Weltevreden  
Road, Northcliff**



# Primary 21 to 42 days

Changes' primary facility accommodates 16 patients and is situated in Northcliff Johannesburg. This is the most intensive phase of treatment and focuses on dismantling denial and assisting a patient through detox and withdrawal.





# Primary 21 to 42 days

Patients have access to a number of therapeutic modalities on a day-to-day basis and are equipped with an array of tools for coping with life without the use of substances by the time they leave treatment. Therapy is individualised catering for clients' unique circumstances and needs.





# Primary 21 to 42 days

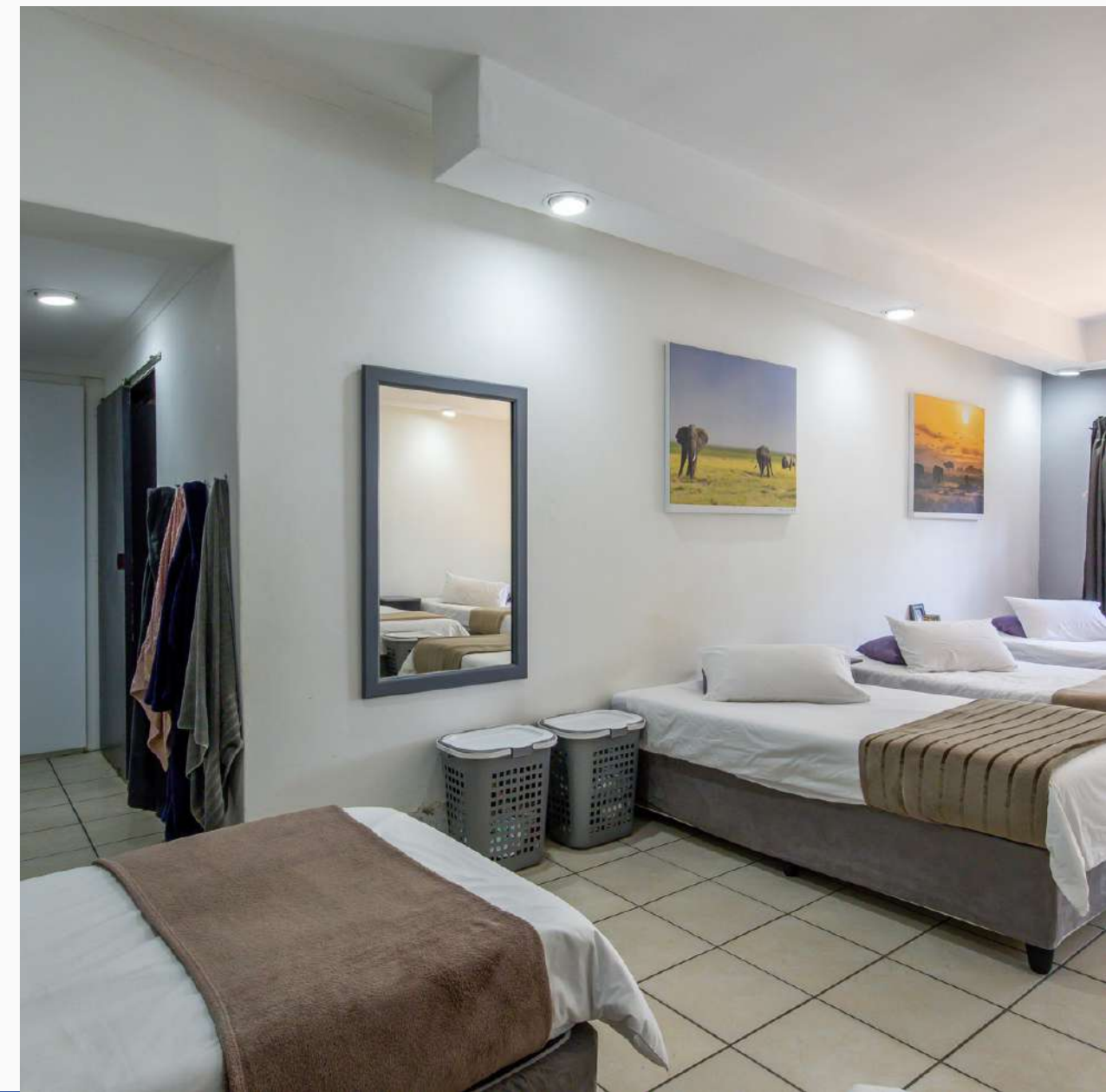
The facility is comfortable and secure, with 24-hour supervision including a registered and experienced nurse. Nutritious meals are provided and clients' dietary needs are considered and catered for.



# 216 Gallery



Our primary care facility

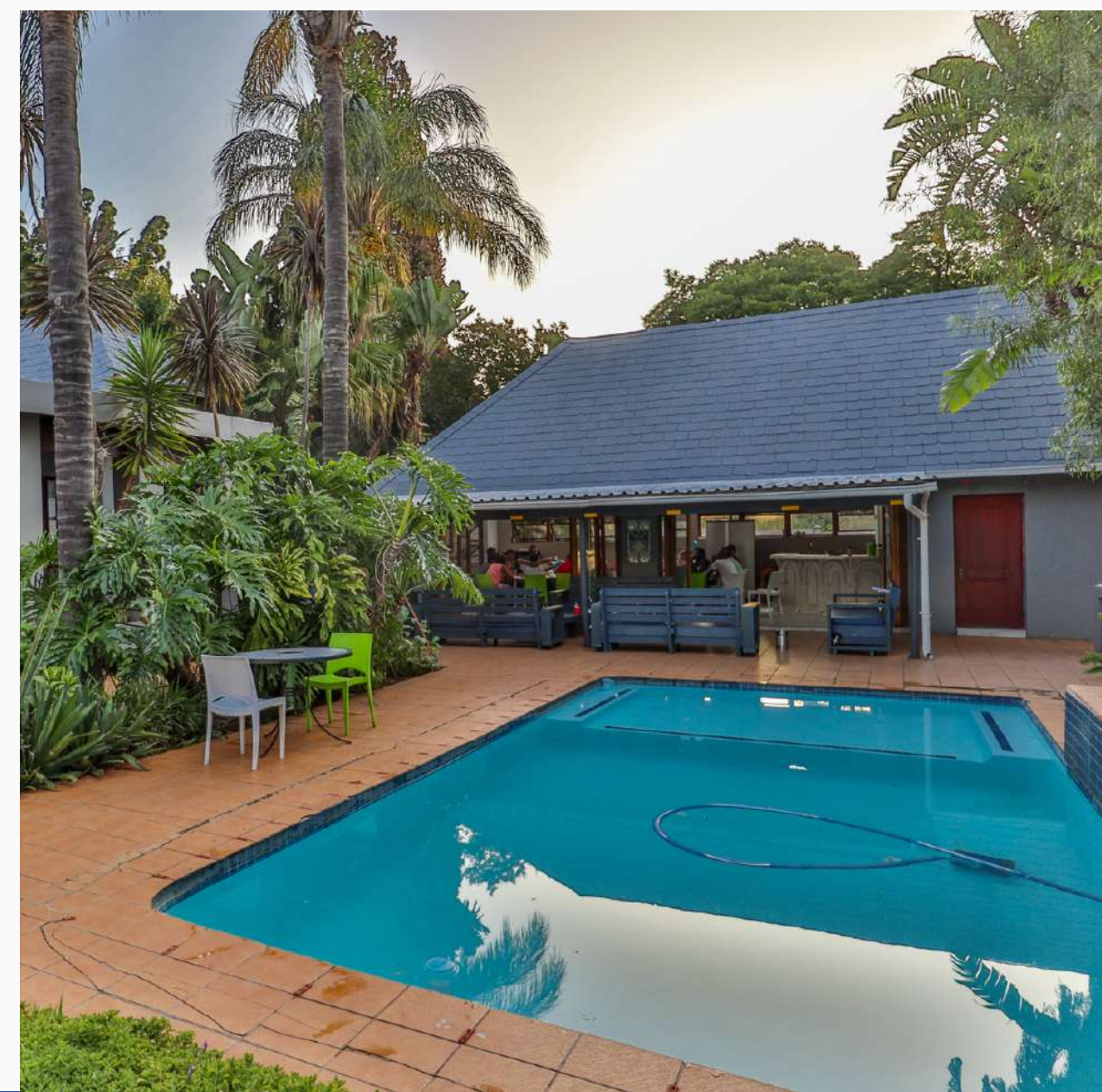
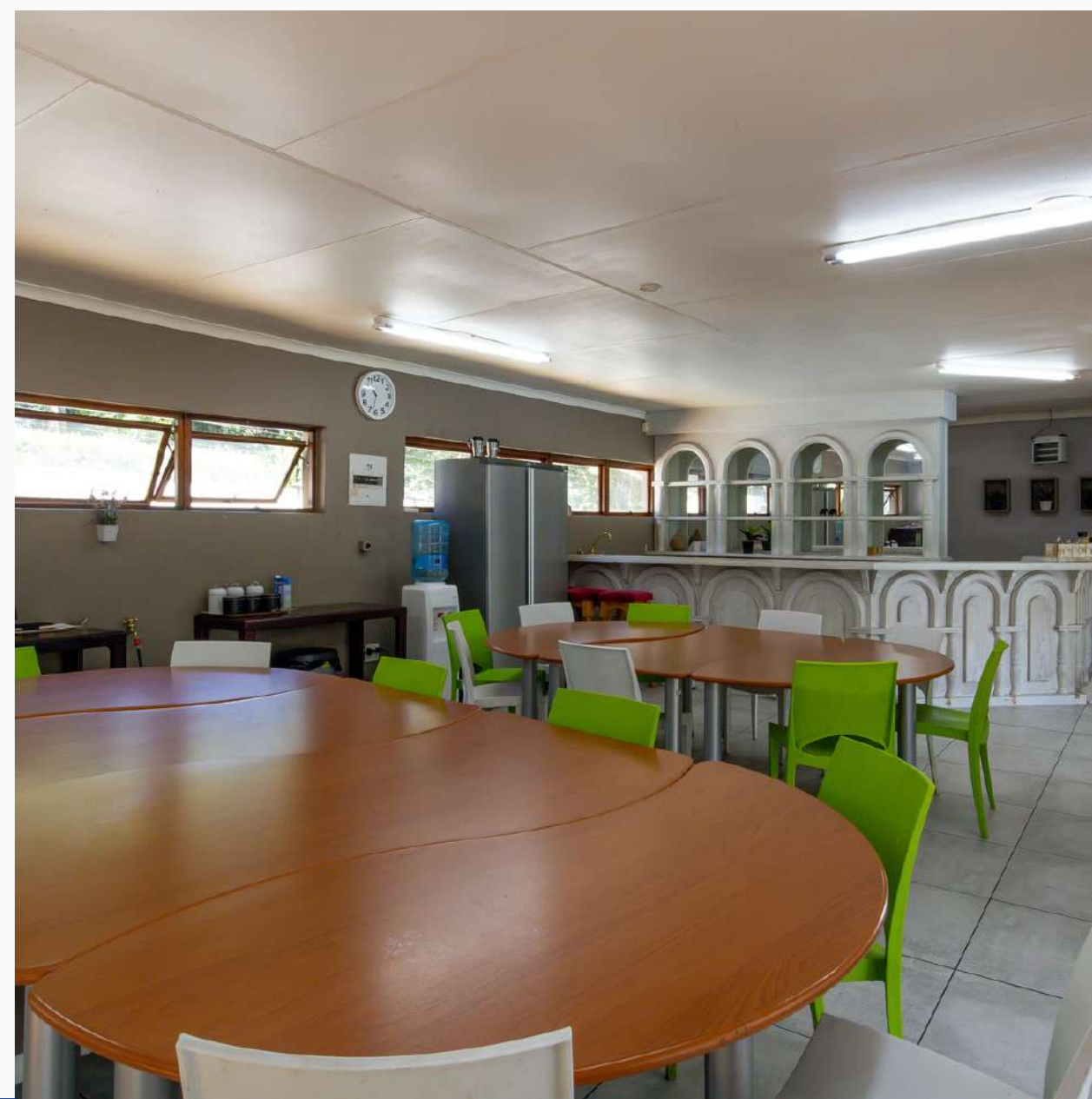




# 216 Gallery



Our primary care facility



# Our Secondary Care Facility



**River Manor**



# River Manor 1-3 months and up

River Manor – colloquially referred to as 'The Farm' – is Changes' long-term treatment facility



# Long Term Treatment Facility

River Manor – colloquially referred to as ‘The Farm’ – is Changes’ long-term treatment facility. Here clients are given the space and time to address their addiction in-depth in a safe and calm environment. It is a 20-bed facility located on a tranquil and spacious plot in Ruimsig.



# Long Term Treatment Facility

Patients have an opportunity to care for our farm animals, this promotes a benefit from animal therapy, including equine therapy. Clients follow a therapeutic routine and are guided by professionals as they develop and grow. There is ample time for self-reflection and clients are guided to develop a deep level of self-awareness.



# Long Term Treatment Facility

Long-term treatment greatly enhances an individual's chance of achieving successful long-term sobriety. Nutritious meals are provided and clients' dietary needs are considered and catered for. Clients benefit from 24-hour supervision including a nurse on night duty catering for any emergencies they may face.

# River Manor Gallery



Our long-term facility



# River Manor Gallery



Our long-term facility





# Halfway House Living



**Fairland and  
Melville**

# Tertiary Care: Halfway Housing Johannes and Auckland

Johannes Halfway House is situated in Fairland, Northcliff while Auckland Halfway House is situated in Melville.

Johannes, Fairland



Auckland, Melville





Johannes, Fairland



# Tertiary Care: Halfway Housing Johannes and Auckland

At Changes' Halfway Houses clients are able to reintegrate back into society in a measured and staged manner. They are able to face real-world challenges while benefitting from support by Changes staff who help them overcome life's obstacles clean and sober.



# Tertiary Care: Halfway Housing Johannes and Auckland

The environment is safe and comfortable with a strict routine and with a number of other safety measures in place. Clients are encouraged to look for work but, if not working, they participate in a daily therapeutic programme.

Auckland, Melville



# Tertiary Care: Halfway Housing Johannes and Auckland

Clients are also introduced to outside resources and communities that will support their recovery in the long-term. While residing in the Halfway House, clients still benefit from mediated group therapy three times a week as well as weekly individual sessions with experienced addiction counsellors.

**Johannes, Fairland**



# Tertiary Care: Halfway Housing Johannes and Auckland

Our Halfway House managers are experienced in providing support for recovering addicts as needed 24-hours a day.

Auckland, Melville

# Johannes Gallery



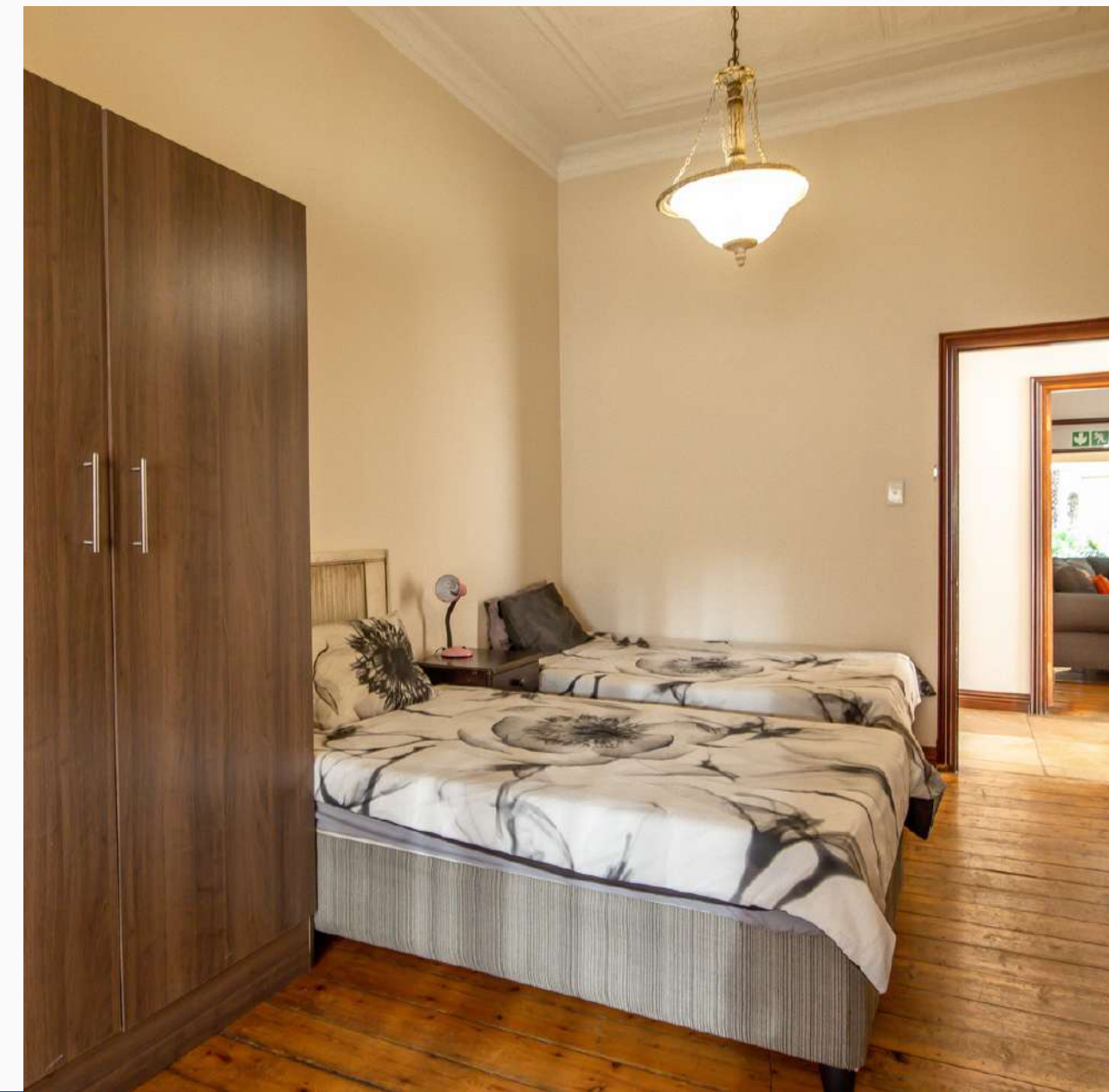
Our halfway house in Fairland



# Auckland Gallery



Our halfway house in Melville







# Contact Us

---



[Change@ChangesRehab.co.za](mailto:Change@ChangesRehab.co.za)



[ChangesRehab.co.za](http://ChangesRehab.co.za)



081 444 7000